



Martin County Property Appraiser
Jenny Fields, CFA



INTERACTIVE CALENDAR

[Searches](#)[Homestead Exemption](#)[Tools & Downloads](#)[Forms](#)[Learn More](#)[News](#)[Our Office](#)

"We VALUE Martin!"

We are committed to helping you understand the valuation process by delivering the outstanding customer service you deserve and expect.

Jenny

Jenny Fields, CFA

[MEET JENNY >](#)

[E-NEWS SIGN UP >](#)

[OUTREACH CALENDAR >](#)

[SCHEDULE A SPEAKER >](#)

INTERACTIVE CALENDAR



September

2023



SUNDAY	MONDAY	TUESDAY	WEDNESDAY	THURSDAY	FRIDAY	SATURDAY
					1 iCareCommunity Magazine	2
3	4 Office Closed - Labor Day	5 Out2News	6 Martin County Business Exchange	7	8 Weichert Realtors Integrity Group	9
10	11 Petition Filing Deadline for the Value Adjustment Board	12	13 One Luxe Realty One Group International	14 Martin County Realtors of the Treasure Coast	15	16
17	18 Premier Realty Group	19	20	21 MCTV (MARTIN COUNTY TELEVISION)	22	23
24	25	26	27	28	29	30

- Presentations
- Publications
- Important Dates
- Videos
- Mailings
- Volunteering

INTERACTIVE CALENDAR

One Luxe Realty One Group International



Jenny Fields, Chief Deputy Karl Andersson, and Director of Appraisal Services & Tax Roll Tyler Steinhauer will present to the realtors at One Luxe Realty One Group International.

For more information about One Luxe Realty One Group International, please visit their website at <https://www.realtyonegroup.com/oneluxe>

Event Information

Event Date

September 13, 2023

New Homebuyer

Post It Notes



MARTIN COUNTY
PROPERTY APPRAISER
Jenny Fields, CFA

CONGRATULATIONS!

YOUR NEXT STEPS

Scan the QR Codes with your mobile device for quick access.



File for Homestead Exemption & Portability



Review New Homebuyer Timeline Handout



Estimate Your Property Taxes



Sign Up for Monthly Information



"We VALUE Martin!"

Website: pa.martin.fl.us • Email: info@pa.martin.fl.us • (772) 288-5608



Property Tax Estimator New Permit Report



Treasure Coast Real Estate Date (2023 Certified Tax Rolls)

TREASURE COAST REAL ESTATE DATA 2022

MARTIN

INDIAN RIVER

ST. LUCIE

162,006

Total Population

543.7

Sq. Miles

96,454

Real Property Parcels

11,111

Personal Property
Records

167,352

Total Population

502.8

Sq. Miles

93,799

Real Property Parcels

10,329

Personal Property
Records

358,704

Total Population

571.7

Sq. Miles

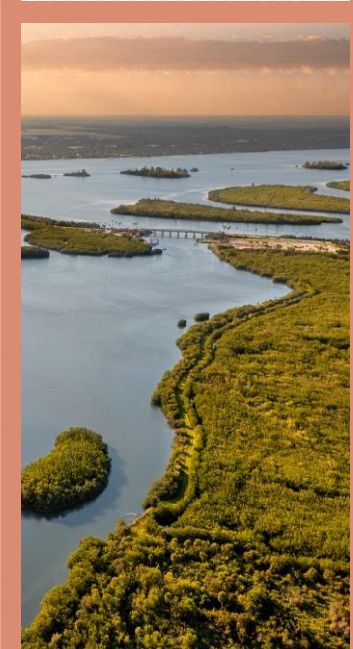
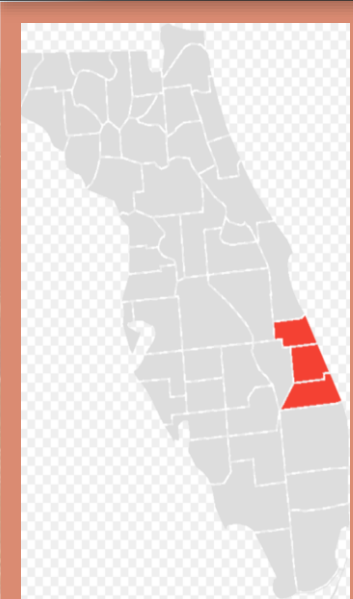
183,465

Real Property Parcels

14,408

Personal Property
Records

TREASURE COAST REAL ESTATE DATA 2022



Parcel Counts	MARTIN	INDIAN RIVER	ST. LUCIE
Total Real Property	96,454	93,799	183,465
Total Residential	74,641	85,335	165,391
Single Family	50,490	58,042	118,740
Condominiums	15,007	15,037	14,619
Mhome/Coop/Misc	4,763	2,661	7,317
Vacant	4,381	9,595	24,715
Multi Family	1,138	790	1,587
Commercial/Industrial	3,494	3,354	5,667
Agricultural	2,043	1,903	2,499
Inst./Gov't/Misc.	8,708	2,282	7,179
Vacant Acreage	6,416	139	1,124

SOURCES: [HTTPS://DATA.CENSUS.GOV/](https://data.census.gov/) & [HTTPS://FLORIDAREVENUE.COM/PROPERTY/PAGES/DATAPORTAL.ASPX](https://floridarevenue.com/property/pages/dataportal.aspx)

TREASURE COAST REAL ESTATE DATA 2022

MARTIN

INDIAN RIVER

ST. LUCIE

53.4B

Total Market
Value

19.35%

22-23 Percent
Increase

45.7B

Total Market
Value

21.84%

22-23 Percent
Increase

66.2B

Total Market
Value

18.58%

22-23 Percent
Increase

31.6B

Total Taxable Value

12.48%

22-23 Percent
Increase

26.5B

Total Taxable Value

13.51%

22-23 Percent
Increase

35.4B

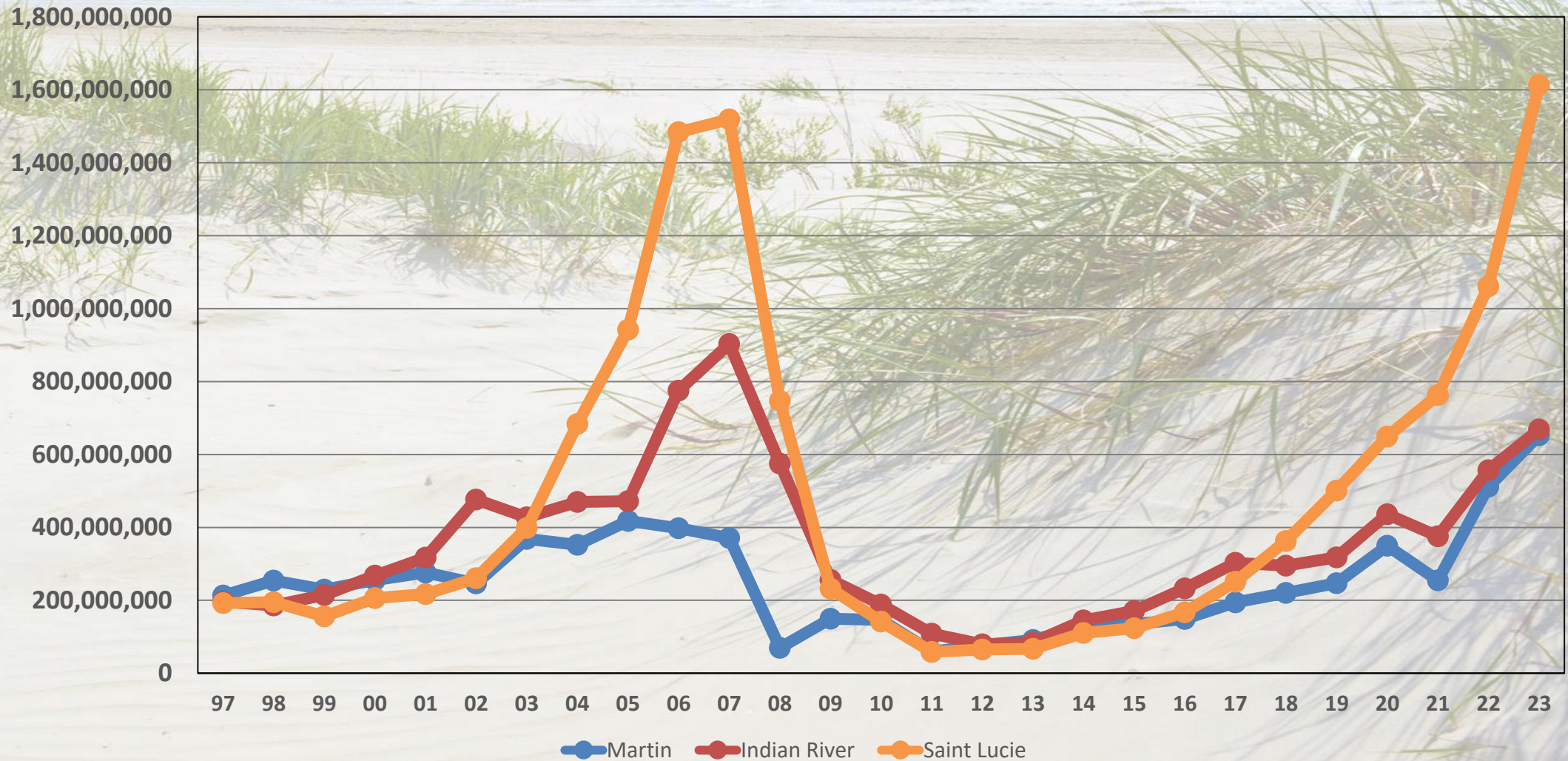
Total Taxable Value

17.67%

22-23 Percent
Increase

TREASURE COAST REAL ESTATE DATA

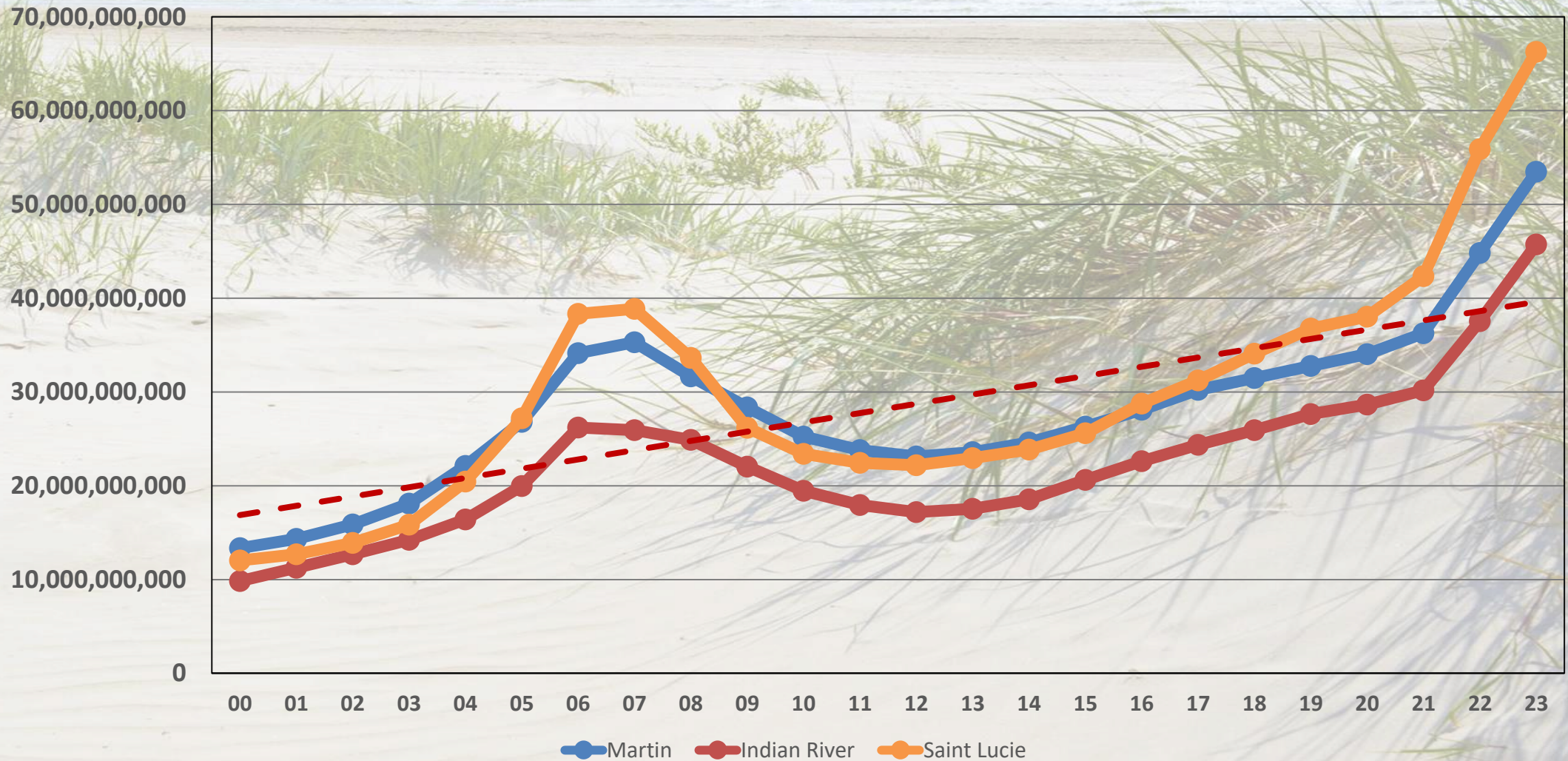
Historical 25 Year New Construction Trends



SOURCES: [HTTPS://DATA.CENSUS.GOV/](https://data.census.gov/) & [HTTPS://FLORIDAREVENUE.COM/PROPERTY/PAGES/DATAPORTAL.ASPX](https://floridarevenue.com/property/pages/dataportal.aspx)

TREASURE COAST REAL ESTATE DATA

Historical 22 Year Market Value Trends



SOURCES: [HTTPS://DATA.CENSUS.GOV/](https://data.census.gov/) & [HTTPS://FLORIDAREVENUE.COM/PROPERTY/PAGES/DATAPORTAL.ASPX](https://floridarevenue.com/property/pages/dataportal.aspx)



New Construction & Development

NEW DEVELOPMENT



Single-Family

-Highpointe (313 SF)



-Preserve at Park Trace (114 SF)



-Cove Royale (117 SF)



-Willow Pointe (65 SF)



-Sabal Pointe (68 SF)



-Edgewater Pointe (117 SF)



-Avila (169 SF)



Multi-Family

-Bridgeview (Aka Indigo) (212 Units)



-The Reserve (197 Units)



-Volaris (270 Units)



-River North (Aka Savannah Place) (280 Units)



-Central Parkway Lofts (172 Units)



-Sailfish Cove (Condo 30-Res/8-Comm)



Martin County Metropolitan Planning Organization (MPO)



Martin County BOCC Proposed Development Map

